

Falco Broadband Groomer

F-330 Series



Key Features

- SDH/SONET channelized groomer
- Multiple E1/T1 monitoring
- Built-in cross-connect matrix for grooming of tributary streams
- Automatic protection switching
- Network ports:
 - STM-1/OC-3
 - Electrical STM-1
 - STM-4/OC-12
 - STM-16/OC-48
 - E1/T1
- WAN monitor ports:
 - Multiple E1/T1
 - STM-1/OC-3
 - STM-4/OC-48

FALCO extends the usefulness of WAN/LAN monitoring equipment to optical and GbE backbones.

Applications

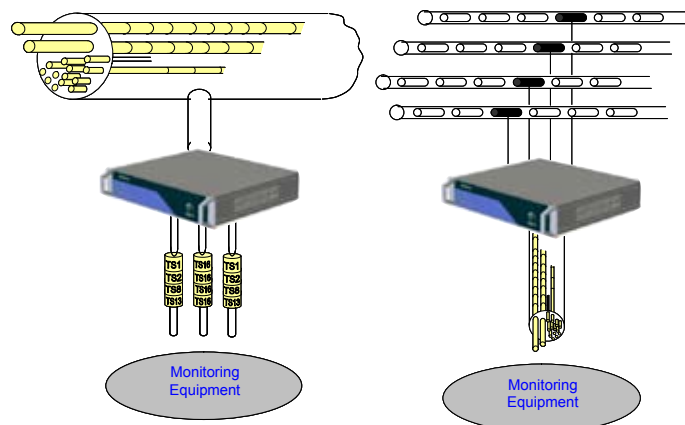
- Access system for :
 - Network probes
 - Protocol analyzer
 - Security equipment
 - Forensic equipment
 - Surveillance systems

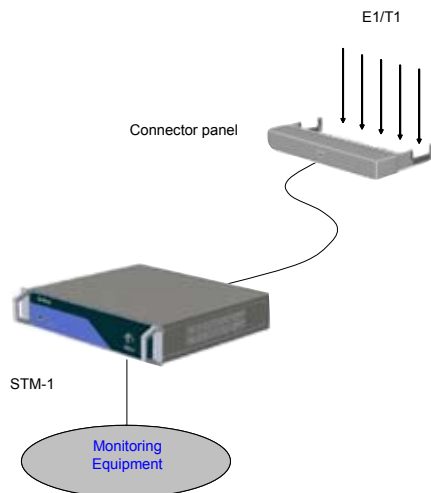
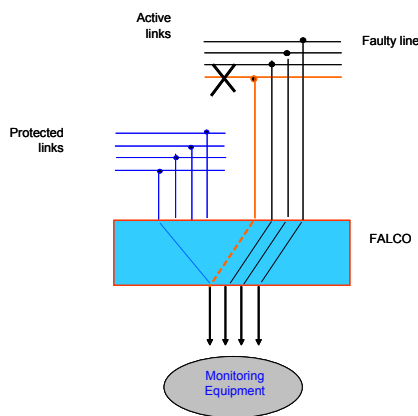
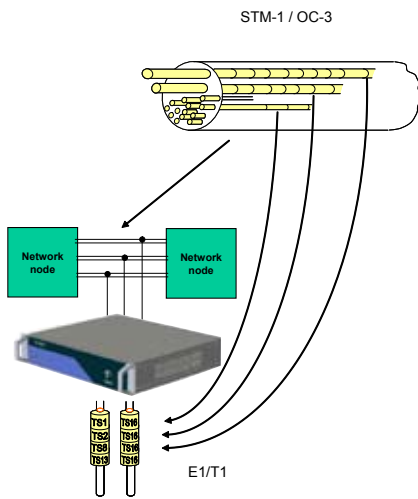
Falco is a network access unit designed to offer access to SDH/SONET/PDH backbones by different monitoring equipment.

Falco combines several network access technologies into one intelligent platform designed to extend the usefulness of monitoring equipment such as probes, analyzers, IDS and surveillance systems.

As a **Groomer**, Falco extracts DS0 or a combination of DS0's from high speed links such as STM-1, STM-4 or up to STM-16 and delivers them to multiple STM-1 or E1 ports.

Falco can also extract DS0's from multiple E1/T1 and deliver them to STM-1/OC-3 outputs.





Grooming

Grooming

Channelized STM-1, STM-4 or STM-16 can be seen as multiconductor cables containing many individual conductors.

Each conductor is organized in TDM frames with standardized time slots.

Falco extracts the desired time slots and formats them into consolidated new streams to match test equipment requirements.

User can configure Falco cross-connect logic to extract the desired streams or parts of streams, format them into data formats required by the specific test equipment and send such consolidated new streams to selected Falco output test ports.

DS0 from multiple STM-1/OC-3 links

Falco allows various kinds of monitoring equipment to cost effectively access many high speed optical links such as STM-16/OC-48, STM-4/OC-12 and STM-1/OC-3.

Falco 330 extracts a DS0 or a combination of DS0's from the high speed links and delivers them to one or more E1, STM-1 or STM-4, depending on the model.

E1/T1

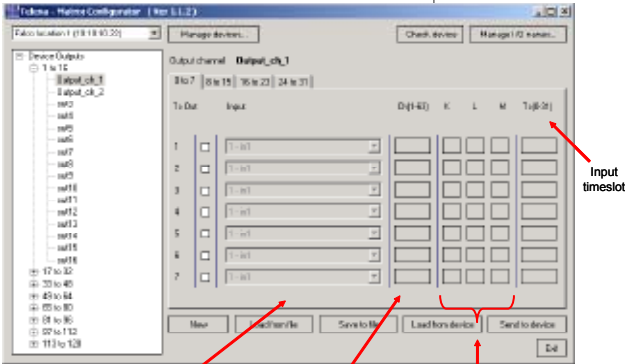
Falco can also monitor multiple E1/T1 lines, extract desired timeslots and provide them on an STM-1/OC-3 output interface.

STM-1/OC-3 and E1/T1

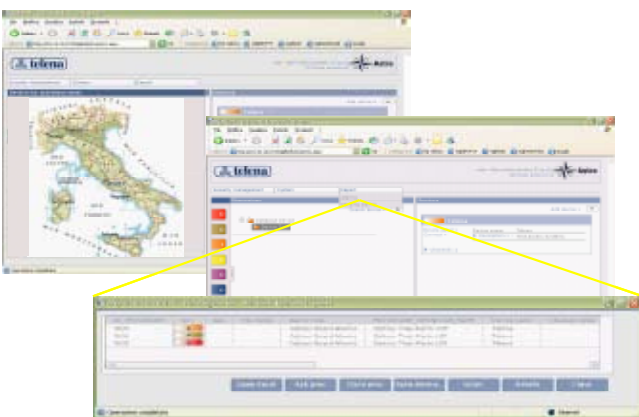
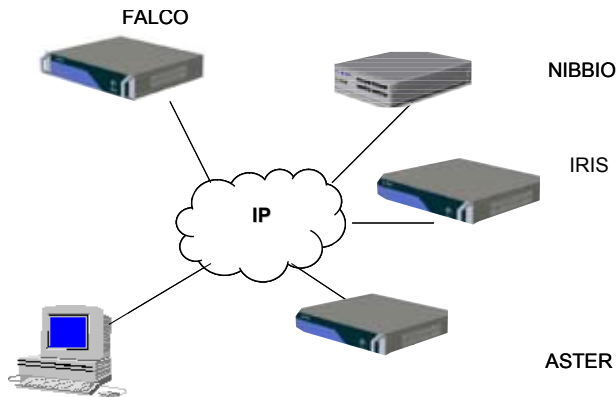
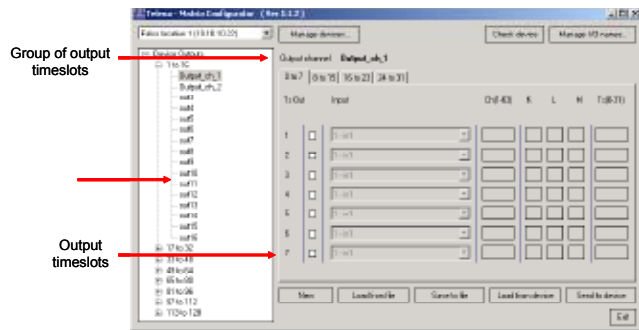
By connecting remote interface modules (RIM) to Falco-330 it is possible to simultaneously monitor optical or electrical STM-1/OC-3 and multiple E1/T1 channelized lines.

Falco output can be multiple E1/T1 or STM-1/OC-3.

3



Input fibers
Input channel
K, L, M coordinates



Falco 330 Management

Falco management

Falco supports several management models:

- Astro
- Falco configurator
- Telnet
- SNMP manager

Falco configurator

Falco Configurator has been specifically designed to configure Falco and its Expander. It offers a user-friendly interface running under Windows 2000 XP and allows to save and restore configuration profiles as well as import/export of mapping information to and from text files.

Telnet

A rich set of Telnet menus and screens allows remote and local set up and monitoring of Falco system.

Telnet access is supported over Ethernet or a serial management port.

SNMP manager

Falco contains a standard SNMP agent.

This allows Falco to be readily integrated into larger network management systems managed by any standard SNMP network manager.

Astro

Astro is a SNMP manager specifically designed to manage all monitoring access system product families.

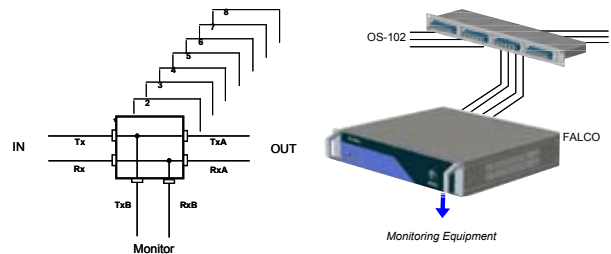
Web based architecture

Astro is accessible via Web by a standard web browser.

Astro provides Falco users with secure access, automatic reports and easily navigated single and multiple views.

Multiple optical splitters

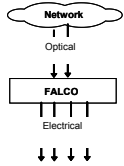
Falco-330 can be equipped with an external totally passive optical splitter.



F-330 Configurations

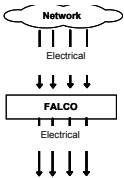
Interface topology	Model	Main functionalities	Bidirectional network ports	Bidirectional test ports
--------------------	-------	----------------------	-----------------------------	--------------------------

Optical STM-1/OC-3 ⇌ E1/T1



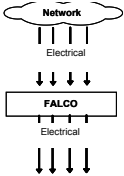
F-330B Series	DS0 groomer	2, 4 or 6 STM-1 2, 4 or 6 OC-3	8 to 128 E1
----------------------	-------------	-----------------------------------	-------------

E3 ⇌ E1



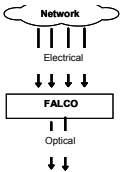
F-330AB Series	DS0 groomer	1 or 3 E3	8 to 16 E1
-----------------------	-------------	-----------	------------

Electrical or Optical STM-1 ⇌ E1



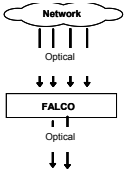
F-330AB Series	DS0 groomer	2 or 4 electrical or optical STM-1	8 to 64 E1
-----------------------	-------------	------------------------------------	------------

E1/T1 ⇌ Optical STM-1/OC-3



F-330C Series	DS0 groomer	32 to 128 E1 32 to 128 T1	1 or 2 STM-1 1 or 2 OC-3
----------------------	-------------	------------------------------	-----------------------------

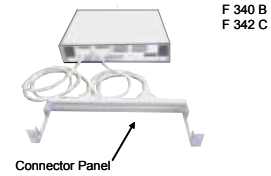
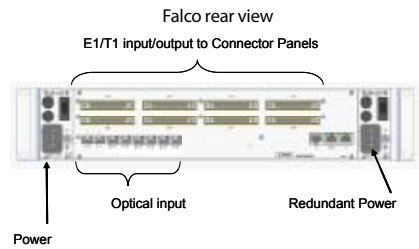
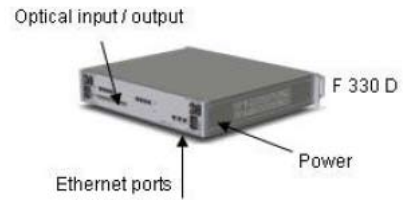
Optical STM-16/OC-48 ⇌ Optical STM-4/OC-12



F-330D Series	DS0 groomer	4 to 12 STM-1 1 STM-16 or 1 OC-48	1 or 2 STM-1 1 STM-4 or 1 OC-12
----------------------	-------------	--------------------------------------	------------------------------------

General

Power	220/115 VAC, 50/60 Hz single or redundant, 36/72 VDC single or redundant
Dimensions (w × d × h)	483 × 437 × 88 mm
Weight	<8 kg (17.6 pounds)



RIMs

- 62 circuits
- 31 RJ-45 connectors
- Impedance 120 Ω
- 1 rack unit



- 62 circuits
- 62 1.0/2.3 coax connectors
- Impedance 75 Ω
- 1 rack unit



Connector panels

F-CP-64-J4-R

- 64 circuits
- 32 RJ-45 connectors
- Impedance 120 Ω
- 1 rack unit



F-CP-64-N3-R

- 64 circuits
- 64 1.0/2.3 coax connectors
- Impedance 75 Ω
- 1 rack unit



F-CP-32-E75-B-0-R

- 32 circuits
- 32 BNC coax connectors
- Impedance 75 Ω
- 1 rack unit



Test & Measurement Regional Sales

NORTH AMERICA TEL: 1 866 228 3762 FAX: +1 301 353 9216	LATIN AMERICA TEL: +1 954 688 5660 FAX: +1 954 345 4668	ASIA PACIFIC TEL: +852 2892 0990 FAX: +852 2892 0770	EMEA TEL: +49 7121 86 2222 FAX: +49 7121 86 1222	www.jdsu.com/test
---	--	---	---	--