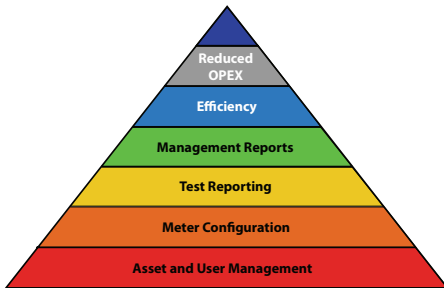


TechComplete™ Test Productivity Pack



Key Features

- Manages assets for the JDSU DSAM families at your fingertips—maintains and displays inventory, firmware, and calibration status
- Manages users and user groups of the Test Productivity Pack—keeps workforce hierarchy and user rights at a glance with a graphical tree view and multiple user templates
- Keeps meters current—synchronizes meters over RF or LAN with central database of channel plans, limit plans, locations, and test results
- Comprehensive reports provide insight into workforce productivity and plant health
- Consistent testing improves workforce efficiency and maintains networks in top condition
- Comprehensive tools increase productivity of daily testing
- Displays and controls DSAM remotely—Allows experienced technicians to help troubleshoot without driving



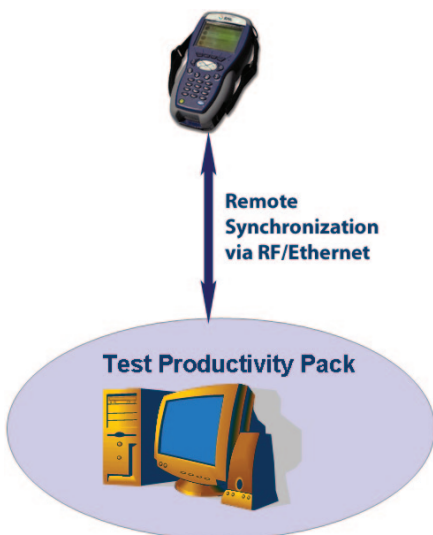
Workforce efficiency is critical to rolling out new services and keeping the plant running in top condition, which is why JDSU is introducing the TechComplete Test Productivity Pack for the DSAM family of meters. It helps increase technician efficiency, decrease call-backs, and eliminates unnecessary truck rolls by ensuring that technicians perform the right tests, access the right data, and gain remote access to their test equipment and results.

The TechComplete Test Productivity Pack can remove technician roadblocks created from having incorrect channel plans and limit plans. It helps keep meters synchronized any time they are on the RF plant or have access to the local area network (LAN).

Access to critical test results through JDSU test equipment is always at your fingertips with the Test Productivity Pack, which keeps DSAM measurements in a central database for reviewing, coaching, reporting, or even deploying to the field as a reference for troubleshooting.

The Test Productivity Pack provides the link between JDSU test equipment, technicians, and your data management. Your office support of field testing is streamlined and consolidated into a powerful suite of tools to make field teams more efficient and resourceful.

The Test Productivity Pack harnesses the power of raw test data gathered by DSAM meters and turns data into insights on plant performance and workforce efficiency, thus reducing customer churn and boosting your company's productivity. Technicians with DSAM meters can accumulate a large amount of test data over time. The Test Productivity Pack enables fast and easy report generation and customization.



Features

Meter Asset Management

Maintaining an accurate inventory of meters and keeping track of where they are, their calibration, and their update status all consume valuable time and resources. The Meter Asset Management tool streamlines these tasks through its ability to maintain and organize DSAM inventories into a database and display each meter’s serial number, firmware and hardware versions, synchronization status, assigned user and the person to whom the user reports, and calibration requirements. Icons with contrasting colors instantly notify supervisors when specific meters require calibration or synchronization.

Supervisors can configure the network settings on individual instruments and upgrade firmware as necessary. Security settings can also be established on individual instruments, and access can be prevented to specific functions such as editing channel or limit plans. Supervisors can assign each DSAM a unique PIN and choose which areas to protect, which prevents unauthorized changes to the DSAM and helps ensure all measurement criteria remain consistent for all meters.

	Model	Serial No.	Name	TechID	Reports To	Comments	Last Sync	Status	Calibrated	FW Version	HW Version
	DSAM	TEMPL...	----	----	----	----	----	----	----	----	----
	DSAM-3500	30711...	Philip Yu	321654	Mitch Gonzalez	Marketing Meter	6/15/09	OK	----	03.4	A1-2-X
⚠	DSAM-2600	43402...	Rich Crouston	316	Alvin Workley	----	6/9/08	Sync Needed	4/29/08	⚠ 03.2.2	B1-2-1-1
	DSAM-2600	43403...	Troy Young	449	Larry Dawson	----	6/14/08	OK	4/22/08	⚠ 03.1.9	B1-3-1-1
⚠	DSAM-2600	43601...	Richard Davis	414	Mitch Gonzalez	Lost	6/16/08	Sync Needed	4/22/08	⚠ 03.1.9	B1-2-1-1
⚠	DSAM-2600	43601...	Derek Strandburg	539	Tim Costa	Spare Cost	5/4/08	Sync Needed	4/22/08	⚠ 03.1.9	B1-2-1-1
⚠	DSAM-2600	43601...	Marshall Lunn	410	Mitch Gonzalez	Sent to repair	6/3/08	Sync Needed	4/23/08	⚠ 03.1.9	B1-2-1-1
⚠	DSAM-2600	43601...	Peter Borovac	423	Mitch Gonzalez	----	6/14/08	Sync Needed	4/22/08	⚠ 03.1.9	B1-2-1-1
⚠	DSAM-2600	43602...	Mike Sanders	439	Mitch Gonzalez	----	6/11/08	Sync Needed	4/22/08	⚠ 03.1.9	B1-2-1-1
⚠	DSAM-2600	43602...	Bryan Hillsdale	326	Alvin Workley	Lost/Stolen6/13/08	4/30/08	Sync Needed	4/22/08	⚠ 03.1.9	B1-2-1-1

Figure 1 Meter Asset Management

User and Permission Management

System Administrators have great flexibility to create and manage users for the TechComplete Test Productivity Pack. The System Administrators can use predefined templates to create users very quickly. With templates, the rights associated with each user group are always consistent. There are six templates defined in the system: System, Manager, Supervisor, Technician, Administrator, and General User.

With numerous users in the system, obtain a quick glance of the the work hierarchy—how many managers are in the system, how many supervisors report to a manager, and how many technicians are managed by a supervisor. The graphical Tree View enables easy and fast viewing and editing of the hierarchy. Expand or collapse a group of users to focus on users of interest.

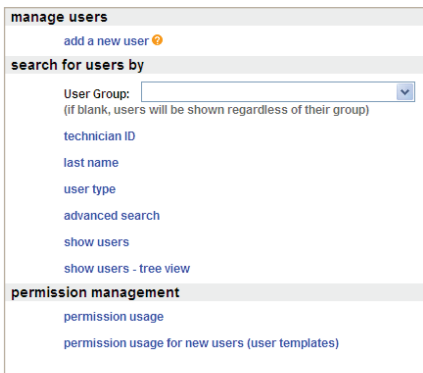


Figure 2 User and Permission Management



Figure 3 User Hierarchy Tree View

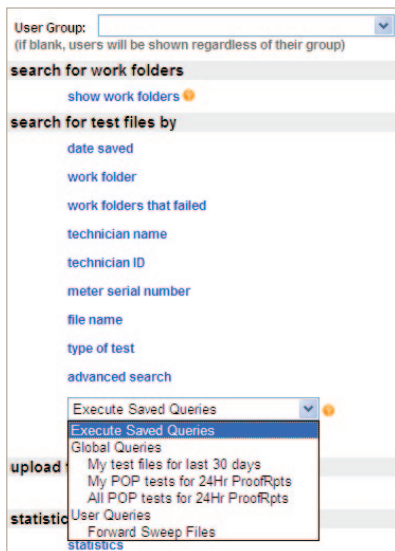


Figure 4 Saved Queries

Test Reporting System

The TechComplete Test Productivity Pack provides a powerful Test Reporting System so that users can search information or create reports relevant to their daily jobs. The Test Reporting System supplies the facility for all test data. Configure and view Home Certification™ reports or search for and view test files conducted by all of your technicians, or those technicians reporting to a specific supervisor. Create combo reports and view measurement results with graphs. If you have sweep technicians or contractors, you can generate powerful sweep reports. All of these functions can be achieved through the web browser.

Reports by E-mail and Saved Queries

Managers and Supervisors need easy, fast access to information that is relevant to their daily job. With the release of the Test Productivity Pack 4.2, a new feature has been added in the Test Reporting System that will significantly reduce the time for them to get reports from the Test Productivity Pack, which is achieved with saved queries and reports by e-mail.

Once set up through the Web client, users can review reports received in their e-mail inboxes any time, anywhere without the need to access the Test Productivity Pack system, or spending additional time to create queries. In a glance, users can go over reports relevant to their job, such as Weekly Home Certification Files, Work Order Compliance for Yesterday, All Work Order Compliance for Yesterday, Failed Work Orders, Not Tested Work Orders, and many reports that users can customize.

Custom Reports

With the Test Reporting System, the TechComplete Test Productivity Pack makes the measurement data readily available to end users and provides an open standards-based interface to the measurement data. Users can create advanced custom reports.

The following are some of the features the Test Reporting System provides:

- Enable direct user access to performance test data
 - Parse and store the data in SQL database tables
- End users can easily create their own custom reports
 - Easy access from tools such as Crystal Reports
 - Simple database structure reduces the need for advanced programming skills

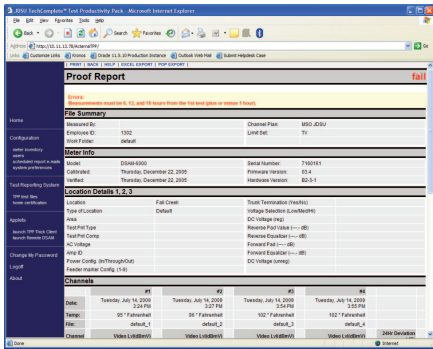


Figure 5 Proof of Performance Report



Figure 6 Sweep Reports

Powerful Sweep Reports on the Web

Heavy sweep users generate a lot of sweep files quickly. With Test Productivity Pack, sweep users can select up to 75 sweep files and create a report in one web page. Apply settings, such as start and stop frequencies, marker positions, and tilt compensation.

Users can apply settings to either all files or to a single file. They can order the files based on their preference, export them to PDF, and file them, which can be achieved in a few minutes.

Import StealthWare™ Sweep Files

If users have accumulated sweep files over the years with the JDSU SDA family of meters and saved them with the JDSU StealthWare, the Test Productivity Pack allows for the import of individual SDA sweep files or all SDA sweep files in a Zip file. Create sweep reports with SDA sweep files similar to the DSAM sweep files. The Test Productivity Pack saves time and effort by eliminating the need to go back to StealthWare for sweep reports.

Back Up Your Data Live

Test data accumulated over time by your technicians are valuable assets to look into for workforce performance and network health trends. The Test Productivity Pack makes it is easy to schedule backups and database optimization using the web client. Define the backup destination directory, number of backup codes, what to back up, and start/end dates.

The benefits for the live backup and speed optimization are twofold:

- No need to shut down the server. Meters can still synchronize, and users can still generate reports.
- With optimization completed, it is fast to query the system for data and generate reports so that information is available when needed.

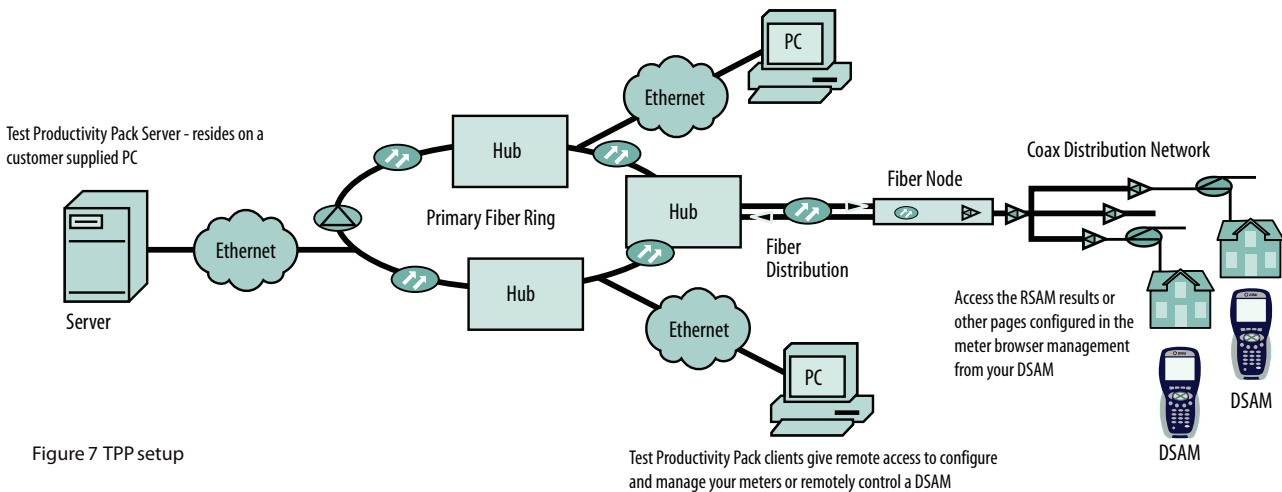


Figure 7 TPP setup

Applications

Verify Tests are Done Right

Test results from the field can be automatically synchronized with the Test Productivity Pack's central database. Supervisors and managers can individually review and analyze test results to ensure that the tests were performed correctly and comply with operating procedures. The TechComplete Test Reporting and Home Certification Management Reporting Systems provide powerful analysis tools to provide coaching and training opportunities for technicians as well as correlating test data with work orders.

Using the DSAM family's unique work folder structure that stores files, such as spectrum, miniscan, Home Certification, and DOCSIS®, supervisors can view test results, archive measurement files, and create or deploy new work folders. When work folders are deployed to DSAMs in the field, technicians can access previous test results for a specific site and use that information to make intelligent decisions. The TechComplete Home Certification Management Reporting System can automatically populate technicians work folder lists with the jobs assigned to them from the workforce management system, resulting in further time savings.

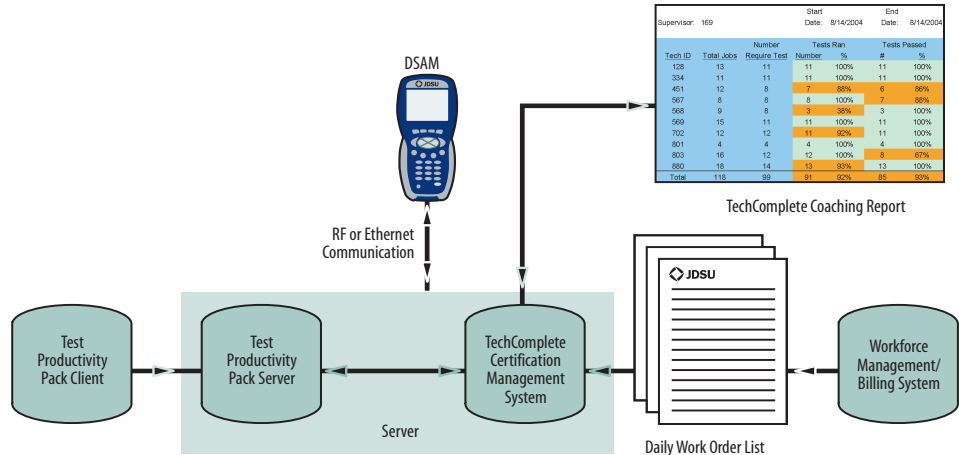


Figure 8 The Test Productivity Pack is the Core Building Block of the TechComplete Cable Solutions

Test Once – Test Correctly

Eliminating call-backs or unsuccessful installs will increase customer satisfaction and ensure that technicians are conducting the right tests with the right data. The Test Productivity Pack provides the Field Data Management tools required to ensure proper testing. Using the proper channel plans and limit plans are critical to successful testing. The Test Productivity Pack lets you edit, deploy, and maintain channel plans, Autotests, and Home Certification tests used on DSAM meters. A central database makes it efficient to roll out lineup changes to all meters. Rigorous and repeatable results can be realized with the addition of the TechComplete Home Certification Management Reporting System.

Reduce Drive Time

Valuable time is wasted regularly driving to various locations to verify test results, help another technician, or store and retrieve test data. The Test Productivity Pack offers multiple solutions to eliminate unnecessary driving.

First, the Test Productivity Pack provides the ability to synchronize from the field data and test files to DSAM meters via a LAN interface, or through the existing RF plant using the DOCSIS communications network. Remote access to information is especially useful for technicians, because they do not have to return to a central location to receive valuable test results. In addition, remote access to archived test results improves the ability of both technicians and supervisors to troubleshoot the network. Channel plans, limit plans, and test results can be archived and retrieved remotely, so technicians do not have to drive back to the main office to connect to a PC or to program the DSAM to receive updates. Real-time synchronization is a reality with the Test Productivity Pack, DSAM meters, and a DOCSIS or Ethernet connection.

Second, with the DSAM remote access, supervisors or senior technicians can view and/or control what occurs on a DSAM that is connected to the LAN or a cable modem. This powerful capability provides remote testing service without rolling a truck to send more experienced staff to help a technician who is having difficulties interpreting test results.



Figure 9 Remote DSAM Access

Get More Done in a Work Day

The Test Productivity Pack lets you focus on managing your technicians and network.

Reports by e-mail together with Saved Queries provide a quick, consistent way for users to access a common set of test data on which to generate reports. Managers and supervisors can get reports on workforce productivity and plant health delivered to their e-mail inbox.

Live data backups make sure that the accumulated test data, meter configuration settings, channel plans, and limit plans are secure. Users running queries and generating reports get fast responses from the system with optimized database structure.

The DSAM meters equipped with the WFA Browser option provides a solution to test all of the advanced services. The browser of the DSAM expands the capability to allow technicians to connect and view other applications while in the field. The connection is made via the DOCSIS channel or via Ethernet LAN and eliminates the need for multiple PCs, PDAs, or wireless data charges. The Test Productivity Pack's Meter Browser Management sets new standards for providing web-browser-based applications to field meters. With the Meter Browser Management tool, supervisors can provide technicians with real-time secure access to predetermined web applications. The DSAM Browser Manager allows for the creation of a controlled web portal for DSAM meters, which eliminates time wasted surfing for the needed application and provides a quick link to any web application for the DSAM. Adding in the TechComplete Work Order Solution makes technicians even more efficient by providing the ability to deploy and complete electronic work orders on the DSAM using real-time interface to the work order system through the DOCSIS interface or Ethernet LAN.

Access the DSAM Remotely

The Test Productivity Pack provides the ability to remotely control the DSAM through the Ethernet port, which gives supervisors or senior technicians the ability to train new technicians, or view and control what occurs on a DSAM in the field. This powerful capability provides remote testing of a service without rolling a truck to send more experienced staff to help a technician who is having difficulties interpreting test results.

Specifications

Minimum System Requirements

The minimum system requirements for the various components are listed below. Because the operating system and hardware platform requirements change over time, please contact your JDSU representative for further information on the latest system requirements.

TechComplete Test Productivity Pack Server & Home Certification™ Management Reporting System

Operating system

Windows 32 bit versions of XP Professional, 2003 Server (Standard or Enterprise), VISTA (Business, Home Basic or Enterprise), or 2008 Server (Standard or Enterprise) with the latest service packs and security updates

RAM	2 GB (required) 4 GB (recommended)
Available hard drive space	1 GB (required) 10 GB + 100 MB per DSAM for 4 years of DSAM data (recommended) Solid State Drive (SSD) from Intel (recommended)
Connectivity	Ethernet
Screen resolution	1024 x 768
IP assignments	Static IP address

Test Productivity Pack Client & Web Browser Client

Operating system

Windows 32 bit versions of XP (Home or Professional), 2003 Server (Standard or Enterprise), 2008 Server (Standard or Enterprise), or VISTA (Business, Home Basic or Enterprise) with the latest service packs and security updates

RAM	1 GB (required) 2 GB (recommended)
Available hard drive space	1 GB (required) 2 GB (recommended)
Connectivity	Ethernet
Screen resolution	1024 x 768
Browser	Internet Explorer 6.0 or later

Note: The Test Productivity Pack server and Home Certification Management Reporting System software must run on the same machine.

Ordering Information

Model	Part Number	Description
Test Productivity Pack Server, 5 clients, 5 meters	1010-00-0926	Test Productivity Pack Server Supports up to 5 meters
Test Productivity Pack Server, 5 clients, 10 meters	1010-00-0911	Test Productivity Pack Server Supports up to 10 meters
Test Productivity Pack Server, 5 clients, 50 meters	1010-00-0894	Test Productivity Pack Server Supports up to 50 meters
Test Productivity Pack Client	1019-00-1512	Test Productivity Pack Client Supports up to 30 concurrent clients
Test Productivity Pack, Add 10 meters	1019-00-1538	Add additional support for 10 Meters
Test Productivity Pack, Add 50 Meters	1019-00-1525	Add additional support for 50 meters
Test Productivity Pack, Add 250 Meters	1019-00-1526	Add additional support for 250 meters
Test Productivity Pack, Add 500 Meters	1019-00-1527	Add additional support for 500 meters

Test & Measurement Regional Sales

NORTH AMERICA TEL: 1 866 228 3762 FAX: +1 301 353 9216	LATIN AMERICA TEL: +1 954 688 5660 FAX: +1 954 345 4668	ASIA PACIFIC TEL: +852 2892 0990 FAX: +852 2892 0770	EMEA TEL: +49 7121 86 2222 FAX: +49 7121 86 1222	WEBSITE: www.jdsu.com/test
---	--	---	---	--