



## Introducing the New T-BERD®/MTS-4000 Multiple Services Test Platform

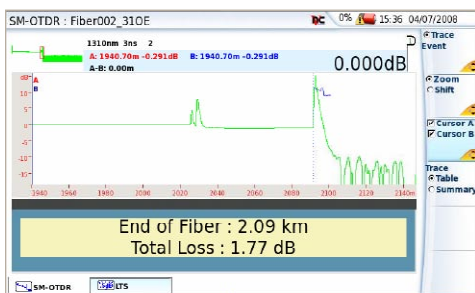
Technologies in access networks evolve quickly due to consumer demand for high-speed Internet access, video on demand, and other applications. As a result, network operators need to equip crews with one scalable and easy-to-use test tool that performs fast, accurate measurements under any condition.

The T-BERD/MTS-4000 platform helps technicians install, turn up, and maintain various next-generation access, fiber (FTTx), and triple-play networks by providing:

- The industry's first advanced fiber, copper, and triple-play capabilities using a single tester.
- A multi-function, scalable solution for several test applications that enables a quick return on investment.
- Features that offer multilayer tests to reduce turn-up and installation time.
- Easy-to-use, icon-based graphical user interface (GUI) and flexible connectivity allow for testing with minimal training.

### Highlights

- Cost-effective, modular, and handheld platform
- Large, 7-inch display (touchscreen option)
- Physical to service layer testing
- Fiber features include OTDR, PON meter, video inspection scope, laser source/power meter, and VFL
- Copper features include volt/ohm meter, time domain reflectometer (TDR), resistive fault locator, and wideband tones/spectral analysis to 30 MHz
- VDSL and ADSL testing features utilize Infineon Technologies chipset and licensed option for Dr. DSL® diagnostic solutions from Aware, Inc.
- Triple-play service testing includes IPTV and VoIP measurements from DSL access interfaces or standard Ethernet port
- Scripting capability automates and simplifies testing and reporting



Example of an OTDR trace

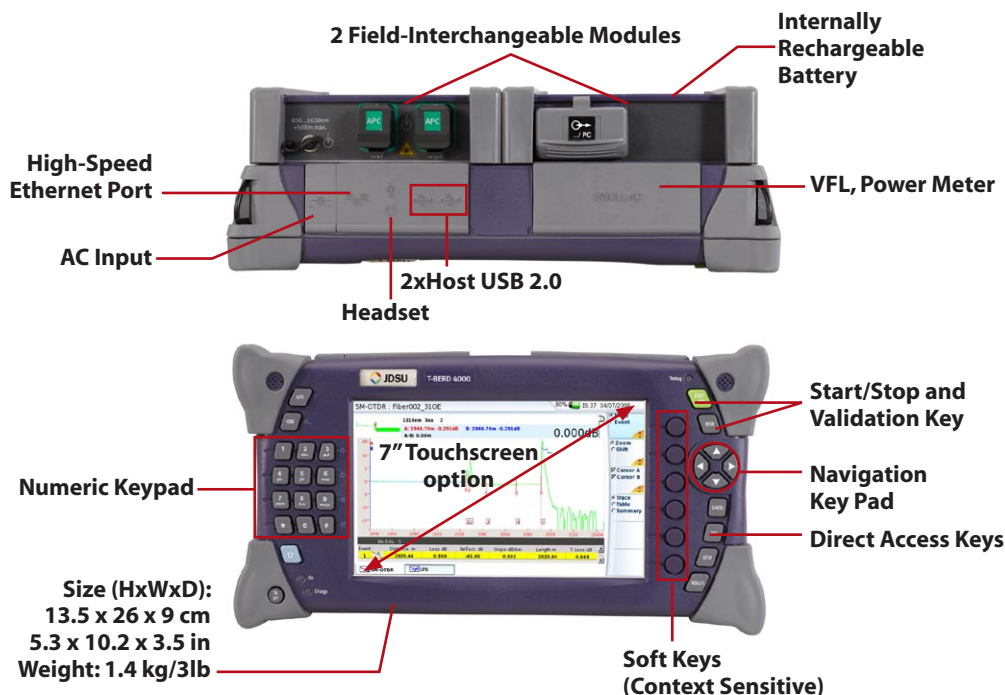


Example of IPTV video stream test

# T-BERD/MTS-4000

## Multiple Services Test Platform

The T-BERD/MTS-4000 is a handheld, rugged, battery-operated test platform that is easy to carry and operate.



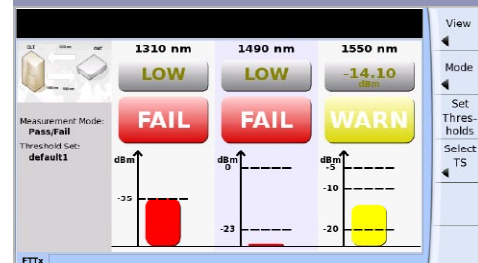
Size (HxWxD):  
13.5 x 26 x 9 cm  
5.3 x 10.2 x 3.5 in  
Weight: 1.4 kg/3lb

The T-BERD/MTS-4000 offers:

- Large, 7-inch color display (with optional touch screen) that improves viewing under any condition.
- Scalable platform for adding two field-replaceable modules at the same time (no tool required). All functions work simultaneously.
- Flexible connectivity with fast data transfer via 2x USB 2.0, Ethernet up to 1 Gb/s, Wifi, and Bluetooth.
- 1 GB extended memory option.
- Extended battery life using smart Lithium-ion cells.
- Connection checker with visual fault locator (VFL), power meter, and video inspection scope options.

The T-BERD/MTS-4000 also provides an ergonomic, intuitive GUI, which adds versatile, user-friendly functions such as:

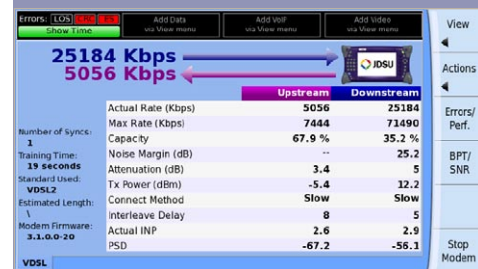
- Scripting capability for automation, simplification, and automatic data reporting
- On-board Web browser for Internet access to back-office systems
- Easy remote control access for remote assistance from any expert user
- HTML/PDF reader



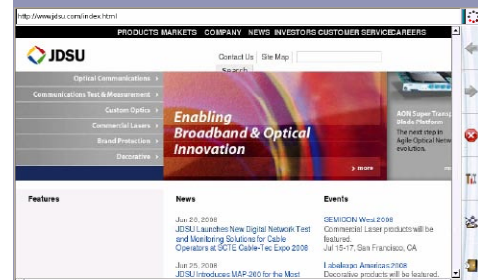
PON meter user interface



Example of a copper trace (TDR)



VDSL test interface



Web browser for Internet access



**North America**  
Tel: 1 866 228 3762  
Fax: +1 301 353 9216

**Latin America**  
Tel: +55 11 5503 3800  
Fax: +55 11 5505 1598

**Asia Pacific**  
Tel: +852 2892 0990  
Fax: +852 2892 0770

**EMEA**  
Tel: +49 7121 86 2222  
Fax: +49 7121 86 1222