



Actionable Enterprise Network Intelligence—ESAM for the T-BERD®/MTS-4000

Today's IT networks are more complex than ever with voice over IP, cloud computing, presence, and virtualization running over high-speed copper, fiber, and wireless infrastructure. The link between productivity of network users and network performance is unprecedented. When a network user experiences performance issues, the IT technician must quickly exonerate the network as the root cause or identify and resolve any network issues. Networks are not static, therefore, moves, adds, changes, and site upgrades are the norm rather than the exception; understanding the expected performance of the network is more difficult than ever. When faced with a potential network performance issue, today's IT technicians need actionable network intelligence from any point in the network—whether at the drop, the access switch, or the distribution/core routers. JDSU portable Enterprise Services Application Module (ESAM) for the T-BERD®/MTS-4000 does not bombard you with data to sort through, it provides you with the information you need to exonerate the network or to take action to resolve the issue.

The Right Information Right Now.

Workflow-Based GUI

The workflow-based GUI guides you through a series of well-structured tests in a logical sequence empowering you to take meaningful, effective action quickly.

Line-Rate Capture with Deep Packet Pre-Capture Filters

Line-rate capture with deep packet pre-capture filters allows you to capture at full GigE line rate without packet loss and to control which packets are captured. This capability dramatically accelerates troubleshooting and diagnosis of complex faults as you can focus exclusively on analyzing only the information most relevant to the immediate troubleshooting task.

Context-Sensitive Packet Capture

Context-sensitive packet capture automatically captures packets relevant to the current troubleshooting or analysis task you are performing. For example, when performing simple tests like DHCP or DNS, the frames associated with that test are automatically captured allowing for instant analysis. Also, you can move from viewing statistics, such as top talkers or top protocols, to capturing pre-filtered frames in three taps of the screen. This capability allows you to quickly focus on the right information about the problem.

Benefits

- Get the right information right now
- Fix problems fast
- Ensure productivity across the enterprise
- Lower technician training costs
- Identify and eliminate true root-causes

Features

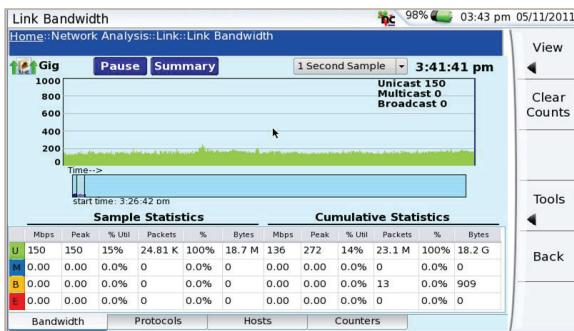
- Works anywhere in the network
- Provides easy, convenient access to the actionable network intelligence you need to operate efficiently and keep your enterprise network humming
- Analyzes captured data files on or off the T-BERD 4000
- Allows for expert analysis of the PCAP files

On-Board Analysis with WireShark and J-Mentor

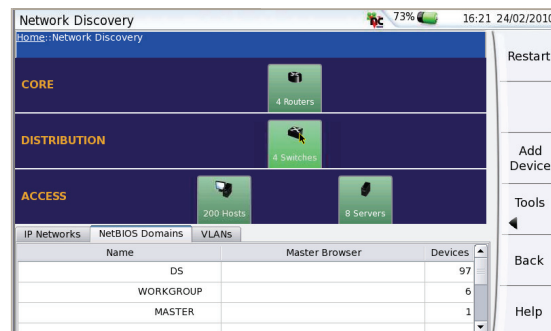
WireShark on board allows you to analyze captured data files directly on the T-BERD/MTS-4000 eliminating the need to learn another protocol analysis program or to transfer the capture to your PC. J-Mentor expert analysis searches capture files for common network faults that result in degraded end-user experience. Combined, these features allow you to get to the root cause of complex faults quickly.

Throughput Testing

Throughput testing allows you to measure asymmetrical throughput up to full Gig-E line rates with selectable frame sizes. This feature is included in the Traffic Generation option which also includes iPerf and raw frame/packet traffic generation. It helps you verify throughput between any two endpoints in your network to ensure you are getting what you pay for.



View link utilization, top talkers, and top protocols



Discovery devices on and off the subnetwork

North America Packages

Ordering Number	Detailed Description
TB4-DIS-LAN	ESAM Enterprise Services Application Module with T-BERD 4000 Base Unit
TB4000-GOVT-LAN	ESAM Enterprise Services Application Module with T-BERD 4000 Base Unit, VoIP Testing, Cisco, and Unistim Call Manager Software
TB4-DIS-LANVOIPWLAN	ESAM Enterprise Services Application Module with T-BERD 4000 Base Unit with VoIP and Wireless LAN Test Capability
TB4-DIS-LANOPMVFL	ESAM Enterprise Services Application Module with T-BERD 4000 Base Unit with Optical Power Meter, Visual Fault Locator, and Fiber Optic Scope
TB4-DIS-LANPKG	ESAM Enterprise Services Application Module with T-BERD 4000 Base Unit, VoIP, Wireless LAN Test Capability, Optical Power Meter, Visual Fault Locator, and Fiber Optic Scope

Europe, Asia, Latin America, Middle East and Africa Packages

Ordering Number	Detailed Description
MTS4-DIS-LAN	ESAM Enterprise Services Application Module with MTS-4000 Base Unit—UK & EMEA, LA, AsiaPAC Power Cords
MTS4-DIS-LANVOIPWLAN	ESAM Enterprise Services Application Module with MTS-4000 Base with VoIP and Wireless LAN Test Capability—UK, EMEA, LA, AsiaPAC Power Cords
MTS4-DIS-LANOPMVFL	ESAM Enterprise Services Application Module with MTS-4000 Base with Optical Power Meter, Visual Fault Locator, Fiber Optic Scope—UK, EMEA, LA, AsiaPAC Power Cords
MTS4-DIS-LANPKG	ESAM Enterprise Services Application Module with MTS-4000 Base with VoIP and Wireless LAN Test Capability, Optical Power Meter, Visual Fault Locator, and Fiber Optic Scope—UK, EMEA, LA, AsiaPAC Power Cords

Note standard cables, battery, and power supply are included with each.

Optional Software

Note optional software applies to ALL packages.

Ordering Number	Detailed Description
C4000-GEN	Traffic Generation option for the ESAM. Includes line rate traffic generation and throughput testing. Also includes iPERF utility.

Note: The T-BERD/MTS-4000 is the industry's first single, handheld test platform to combine advanced fiber, copper, and triple-play capabilities in addition to a wide range of Ethernet and Enterprise test functionality. For more information contact your local JDSU sales representative.



North America
Tel: 1 866 228 3762
Fax: +1 301 353 9216

Latin America
Tel: +1 954 688 5660
Fax: +1 954 345 4668

Asia Pacific
Tel: +852 2892 0990
Fax: +852 2892 0770

EMEA
Tel: +49 7121 86 2222
Fax: +49 7172 86 1222

www.jdsu.com/esam