

Viavi MTS/T-BERD TB8000e V2 Mainframe & BERT Module Software Update Instructions



September 29, 2017

Table of Contents

Scope.....	2
1. Network Upgrade	2
2. USB Upgrade	8
3. StrataSync.....	13

Scope

There are three methods to update T-BERD 8000 V2 software:

1. Network upgrade - Use this method to update your T-BERD via an Internet connection.
2. USB upgrade - Use this method to update your T-BERD with a USB thumb drive.
3. StrataSync upgrade - Use this method if your T-BERD 8000 V2 is managed using Viavi's StrataSync Asset Management system.

The T-BERD must be connected to AC Power, regardless of update method.

1. Network Upgrade

<i>Step</i>	<i>Action</i>	<i>Details</i>
1.	Power On	Press and hold the ON/OFF button briefly to turn on the T-BERD 8000 V2.
2.	AC Power	Connect the AC power adapter to the power connector on the right side of the T-BERD 8000 V2.
3.	LAN Connection	Connect the Ethernet Management Port on the top of the T-BERD 8000 V2 to a network connection with internet access, using CAT 5E or better cable.
4.	Home	Press the HOME button, at the right side of the display, to display the HOME screen selections.

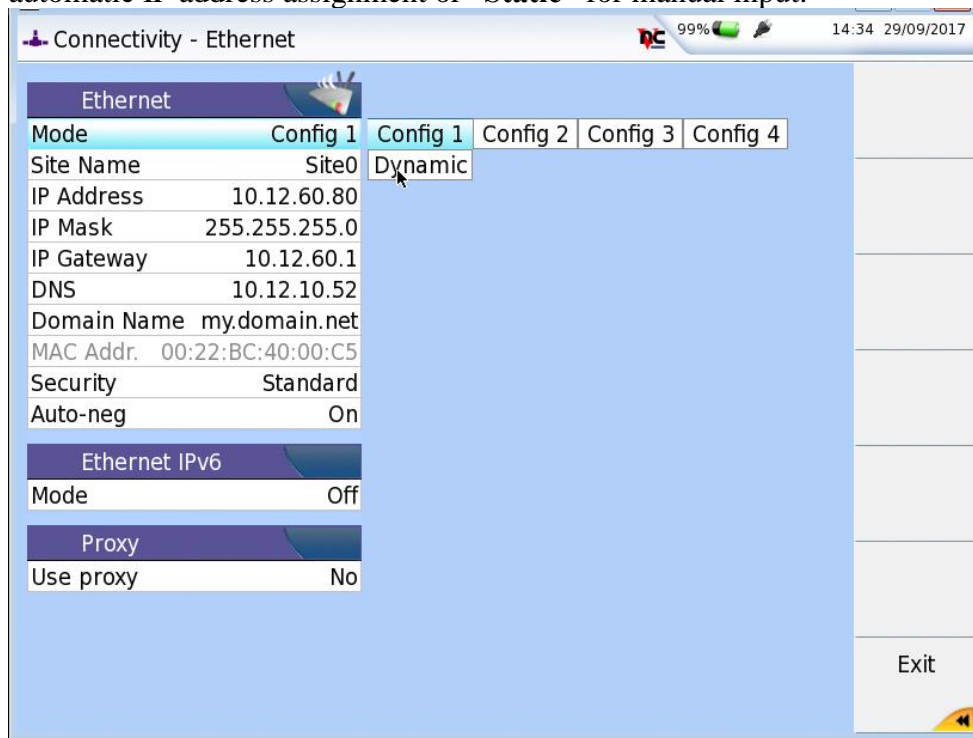
The screenshot displays a network management interface with a light blue background. At the top, a header bar contains a home icon, the text "Home", and system status icons including a battery level at 96%, a signal strength indicator, and the date and time "09:17 am 10/06/2017".

The main dashboard is organized into several sections:

- T-BERD 8000E:** A vertical label on the left side of the top section.
- Navigation Icons:** A row of icons for "SETTINGS", "Connectivity" (highlighted with a tooltip), "HELP", "SmartAccess", "APPS", and "STRATASYNC".
- BERT MSAM1:** A vertical label on the left side of the middle section, with a yellow square icon labeled "BERT" below it.
- 8146 SRL:** A vertical label on the right side of the middle section, with four icons for "EXPERT OTDR" and "SMART TEST" (two orange and two purple).
- BERT MSAM2:** A vertical label on the left side of the bottom section, with a yellow square icon labeled "BERT" below it.
- BERT MSAM2:** A vertical label on the right side of the bottom section, with a yellow square icon labeled "BERT" below it.

5. Network Settings

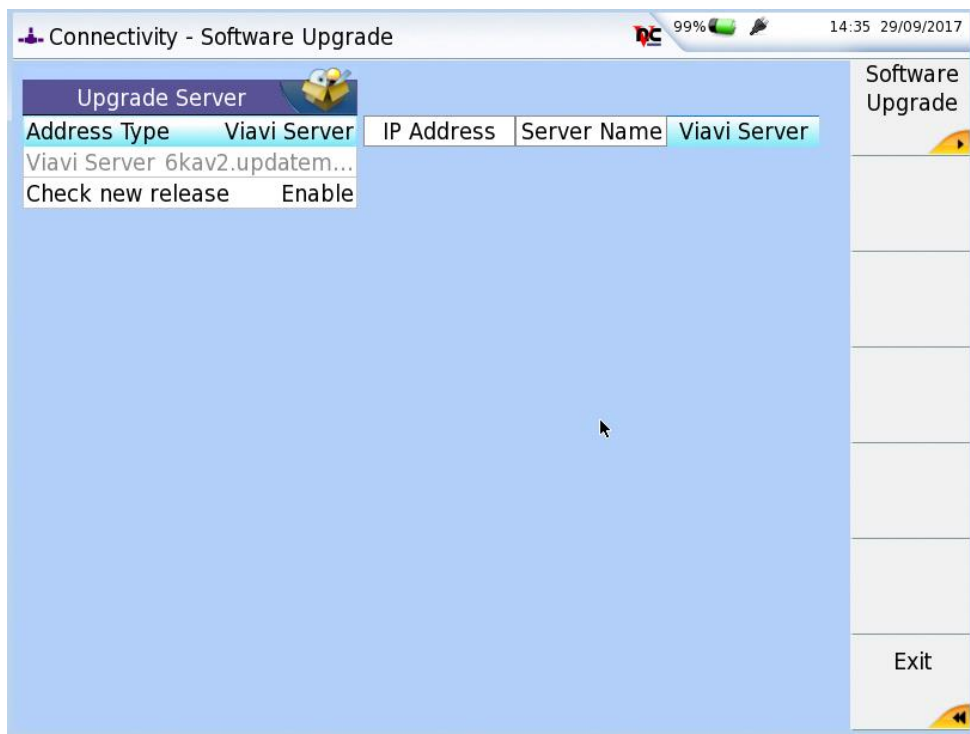
Press the **CONNECTIVITY** icon and then the **ETHERNET** icon to display LAN Settings. Touch on **MODE** and select **DYNAMIC** to “DHCP” for automatic IP address assignment or “Static” for manual input.



After configuring LAN settings, press the EXIT button, on the right side of the display to exit back to the Connectivity menu.

6. Upgrade

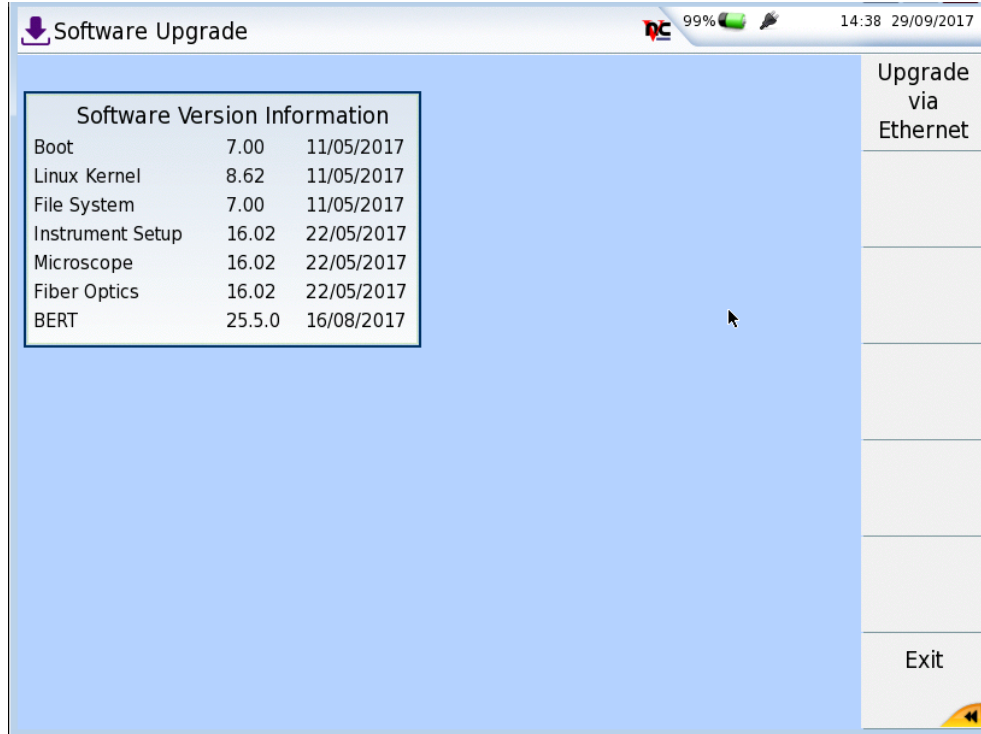
Press the **UPGRADE** icon, to display upgrade methods.



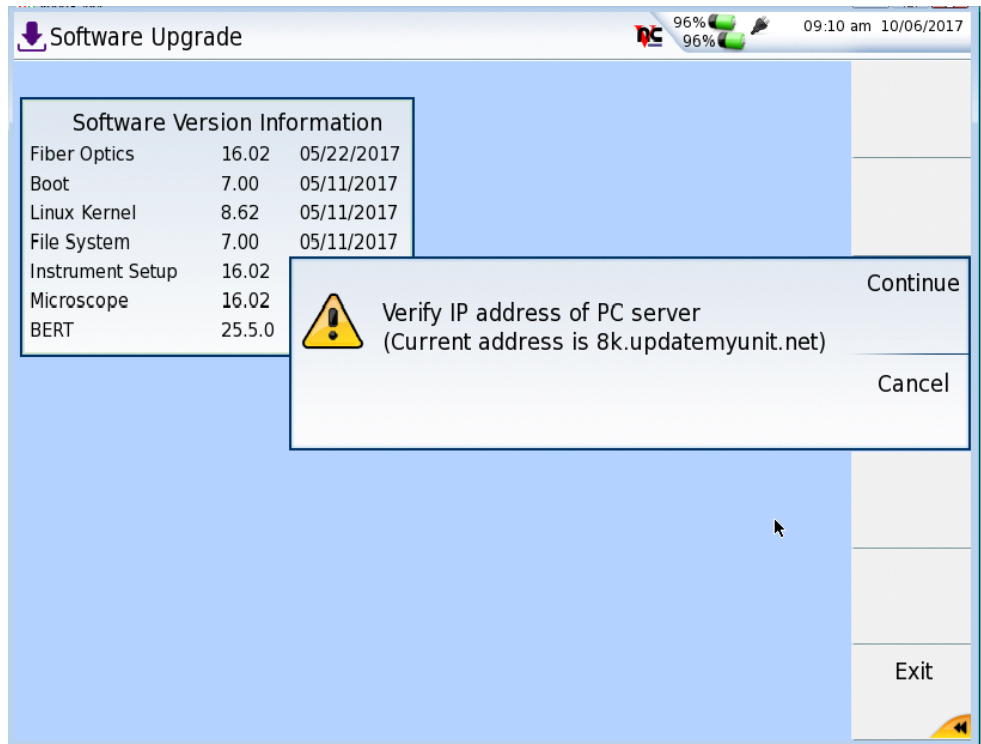
Set **ADDRESS Type** to Viavi Server.

7. Connect

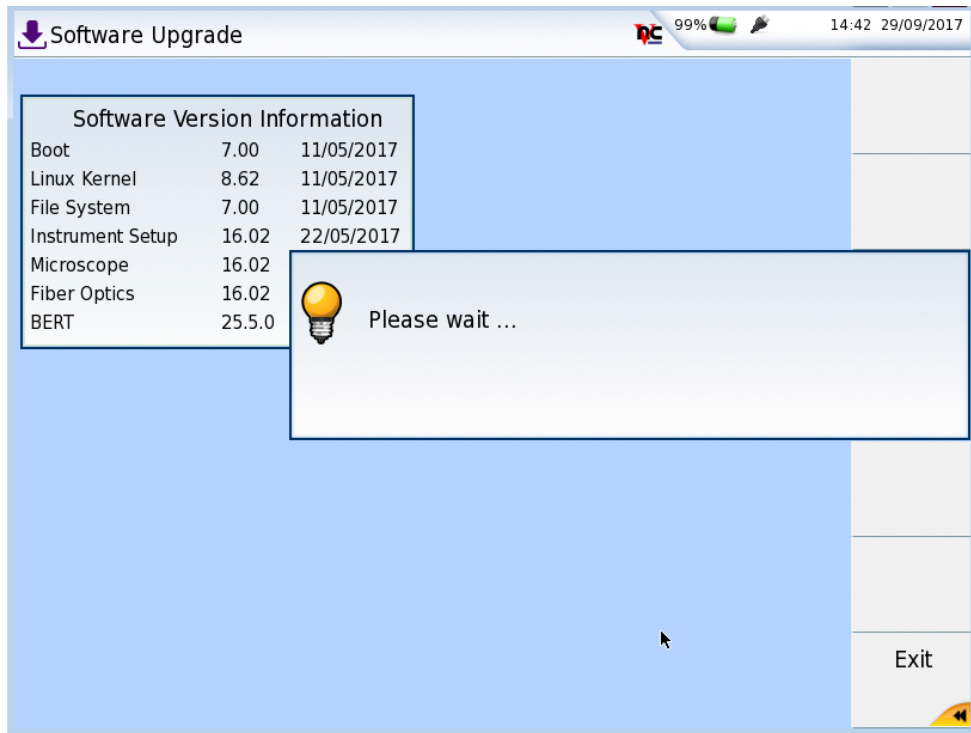
Press **SOFTWARE UPGRADE** and then **UPGRADE VIA ETHERNET**.



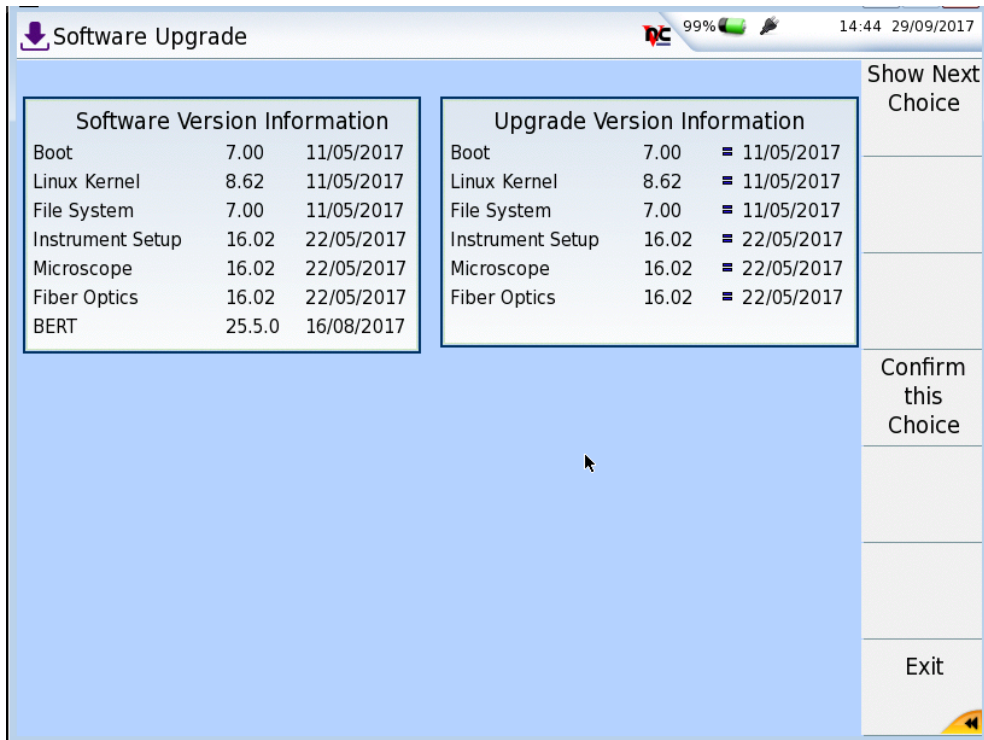
When prompted to confirm the address as 8kav2.updatemyunit.net press **CONTINUE**.



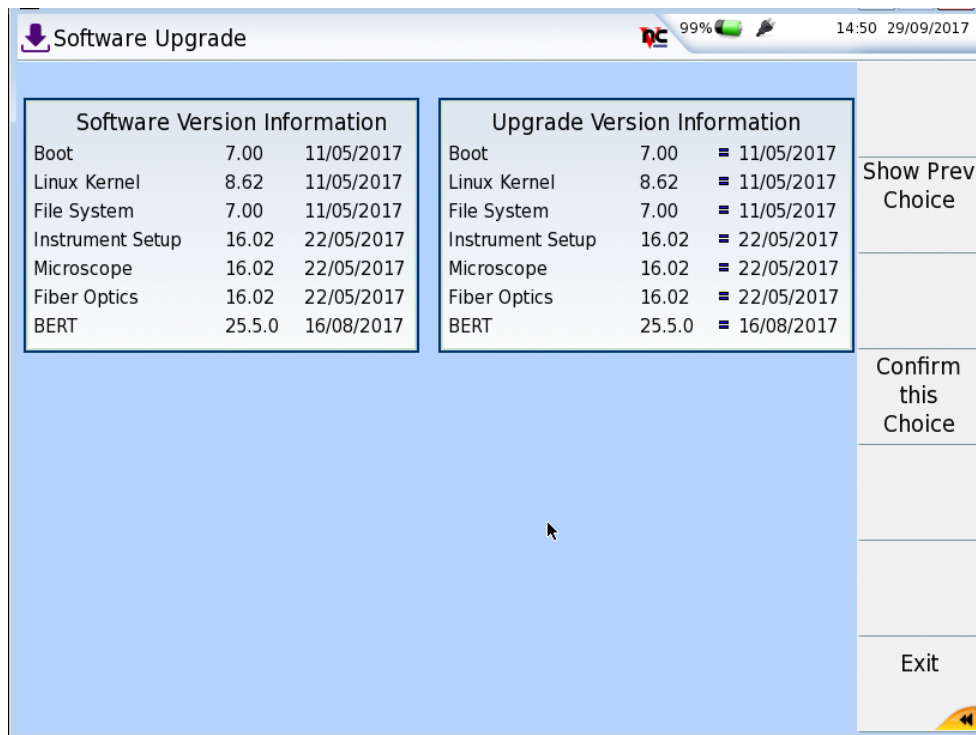
You will receive a prompt to wait as it contacts the upgrade server.



The unit will present the first selection for Fiber Optics only upgrades. Note that BERT software version is not listed on the right side of the screen.



Press the **SHOW NEXT CHOICE** to proceed to the BERT upgrade.



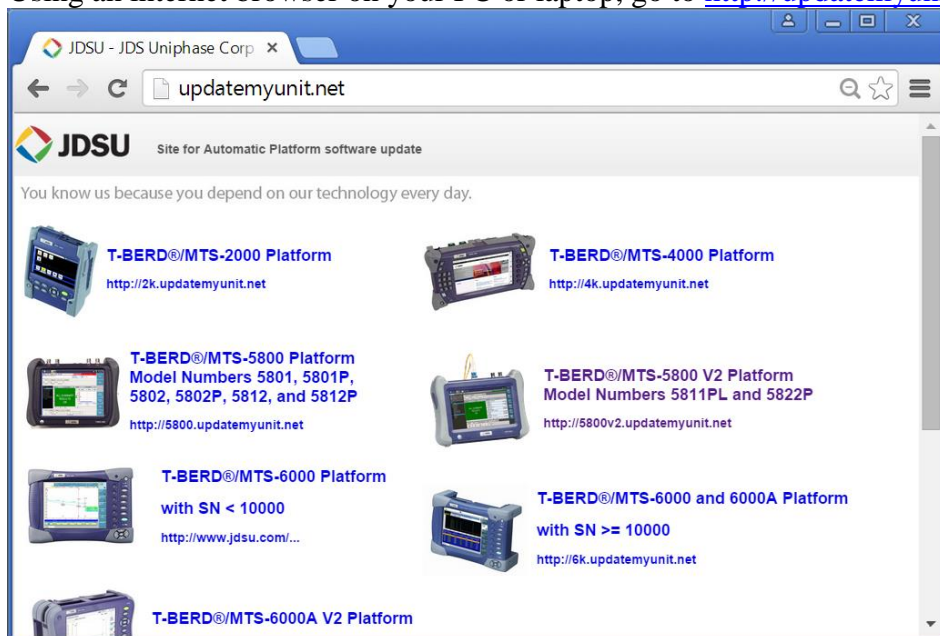
The BERT upgrade version should now be displayed on the right side of the screen. Press CONFIRM THIS CHOICE to begin the upgrade.

B

2. USB Upgrade


Step	Action	Details
------	--------	---------

1.	Updatemyunit.net	Using an internet browser on your PC or laptop, go to http://updatemyunit.net/
----	------------------	---



T-BERD®/MTS-8000 V2 Platform
<http://8k.updatemyunit.net>

2.	8000v2	Click on to display the T-BERD 8000 V2 upgrade portal.
----	--------	--



If your current version is too old (before 2013),
Please upgrade to Base8kv2-14455 first, with Older software release below

Second Choice			
"Boot	" =	7.00	05/11/2017
"Linux Kernel	" =	8.62	05/11/2017
"File System	" =	7.00	05/11/2017
"Instrument Setup	" =	16.02	05/22/2017
"Microscope	" =	16.02	05/22/2017
"Fiber Optics	" =	16.02	05/22/2017
"BERT	" =	25.5.0	08/16/2017


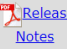
If your current version is too old BERT 17.3 or before (before 2013),
Please upgrade to BERT 20 first, with Older software release below

With latest Software Version, Setup Unit : HOME -> Connectivity -> Upgrade -> Serv
Name with : Bk.updatemyunit.net

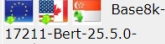
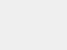
Then press : Software Upgrade

With Legacy Software Version, Setup Unit : HOME -> System Settings -> Upgrade Parameters -> Server Name with :
Then press : Exit -> Expert Tools -> Upgrade -> Software Upgrade

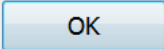
Download latest Fiber Optics Software Application

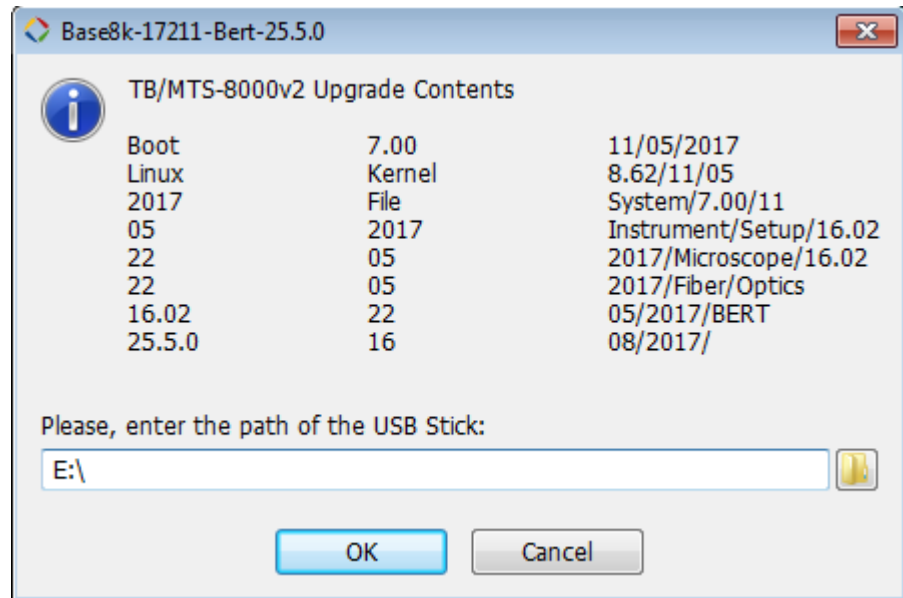
 Base8k- 17211-Win32.exe [291.564 M]	 Release Notes	Year:2017	"Boot	" =	7.00	05/11/2017
		Week:21	"Linux Kernel	" =	8.62	05/11/2017
		Day:1	"File System	" =	7.00	05/11/2017
		[Mon 22	"Instrument Setup	" =	16.02	05/22/2017
		May	"Microscope	" =	16.02	05/22/2017
		2017]	"Fiber Optics	" =	16.02	05/22/2017

Download Latest Combo (Fiber Optics and BERT) Software Application

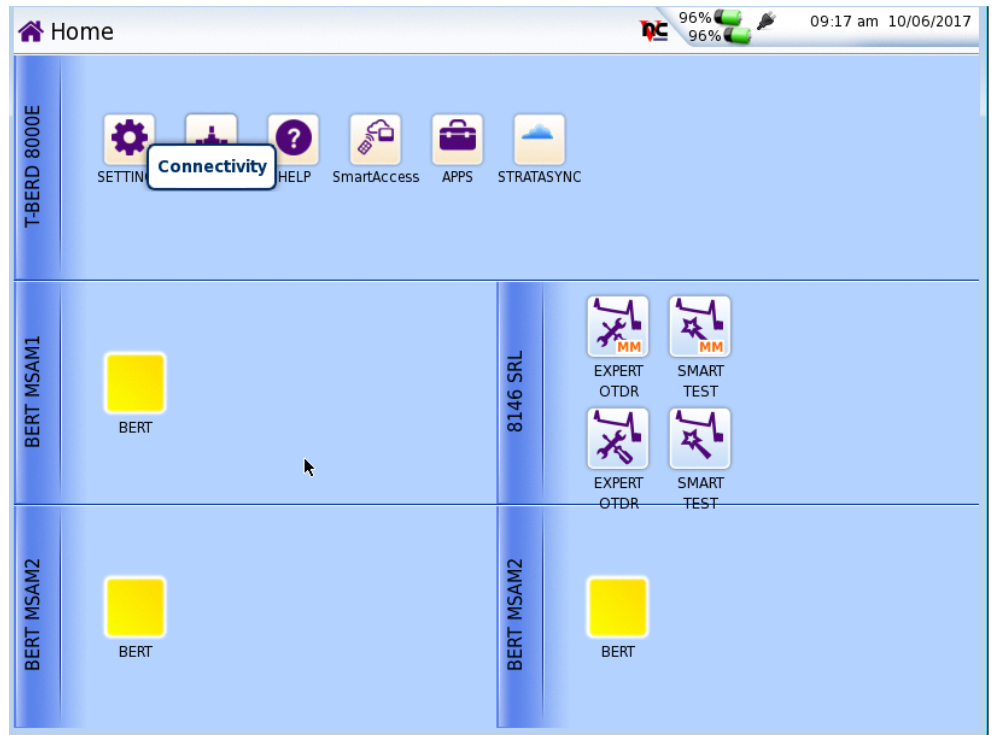
 Base8k- 17211-Bert-25.5.0- combo-Win32.exe [1785.217 M]	 Release Notes	Year:2017	"Boot	" =	7.00	05/11/2017
		Week:21	"Linux Kernel	" =	8.62	05/11/2017
		Day:1	"File System	" =	7.00	05/11/2017
		[Mon 22	"Instrument Setup	" =	16.02	05/22/2017
		May	"Microscope	" =	16.02	05/22/2017
		2017]	"Fiber Optics	" =	16.02	05/22/2017
			"BERT	" =	25.5.0	08/16/2017

[Older software releases are available here](#)

3. Download From the second selection labelled Download Latest Combo (Fiber Optics and BERT) click on the flag icon to download the current software revision from the selected download server. There are choices for North America, EMEA and APAC servers. Save it to your desktop and wait for the download to complete.
4. USB Stick Insert a USB thumb drive into the USB port on your PC or laptop.
5. Extract Open and run the downloaded file, enter the path of the USB stick, and press  to extract files.

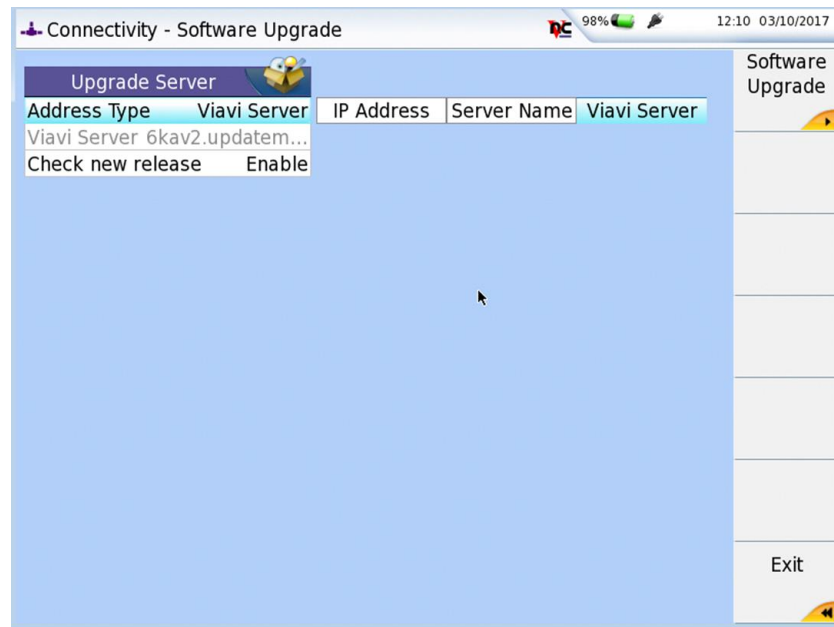


6. Eject Safely eject the USB drive from your PC or Laptop
7. Power on T-BERD Press and hold the ON/OFF button briefly to turn on the T-BERD 8000 V2.
8. Power Connect the AC power adapter to the power connector on the right side of the T-BERD 8000 V2.
9. USB Connect the USB Thumb Drive to one of the USB ports on the top of the T-BERD 8000 V2. An 8GB or smaller drive is recommended.
10. Home Press the Home button, to the right of the display, to display the HOME Screen selections.



11.

Press the **CONNECTIVITY** icon and select **UPGRADE**.

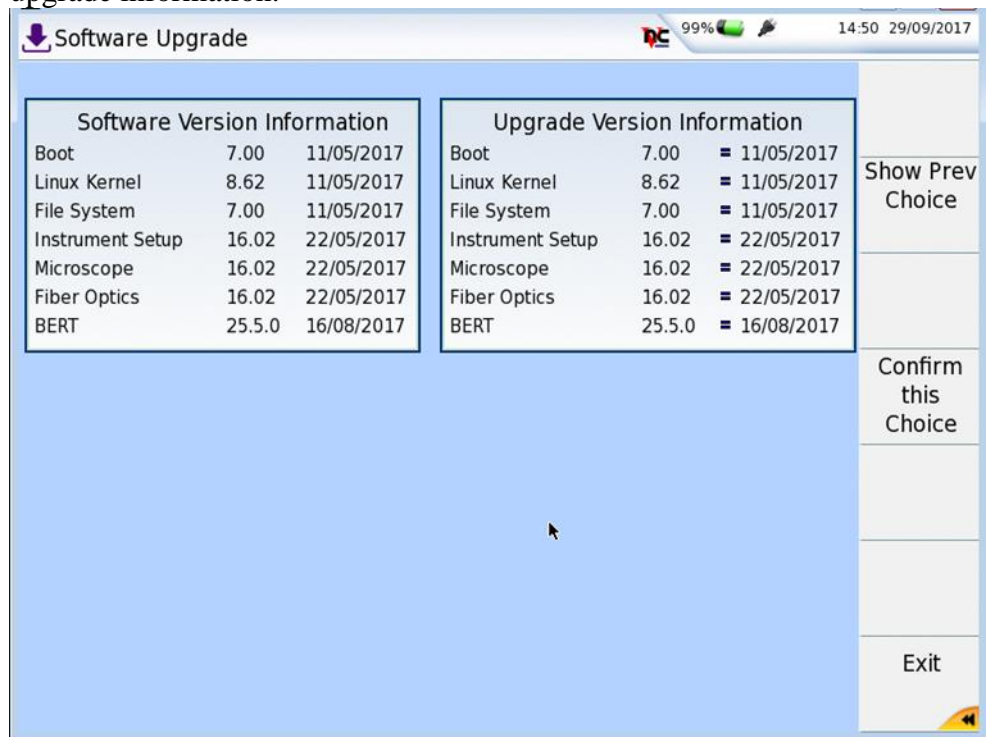


12. Upgrade

13. USB Upgrade

Press Software Upgrade and then Upgrade from USB to display upgrade versions available on the USB stick. Confirm when prompted to display the

upgrade information.

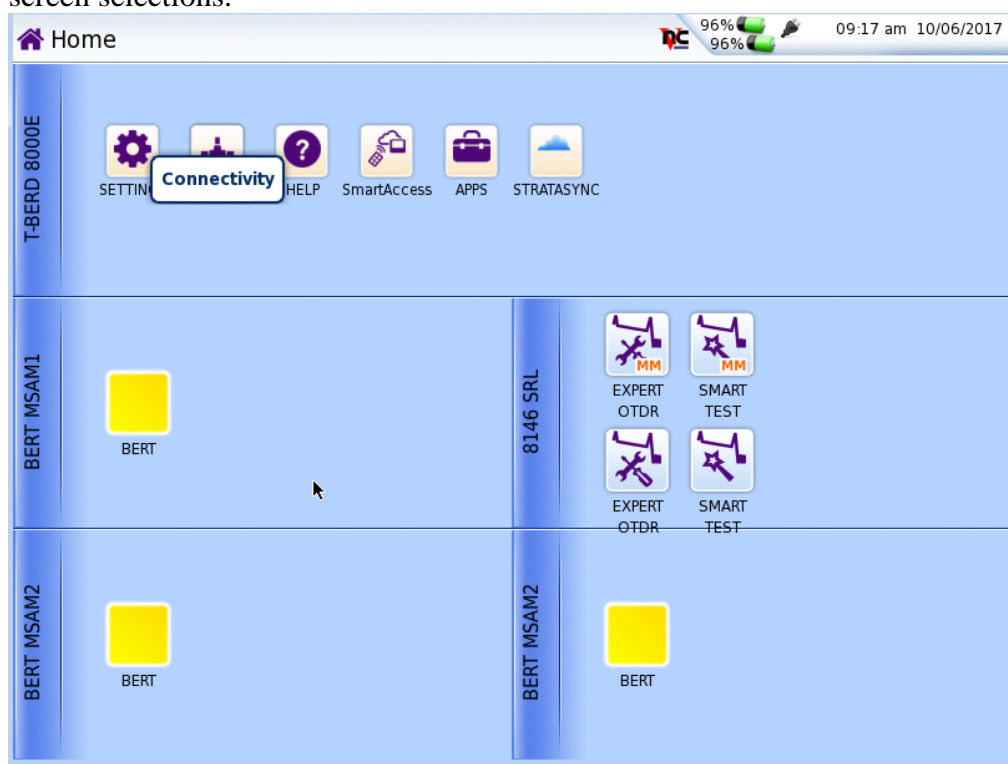


14. Start Upgrade

Press Confirm this Choice to start the upgrade.

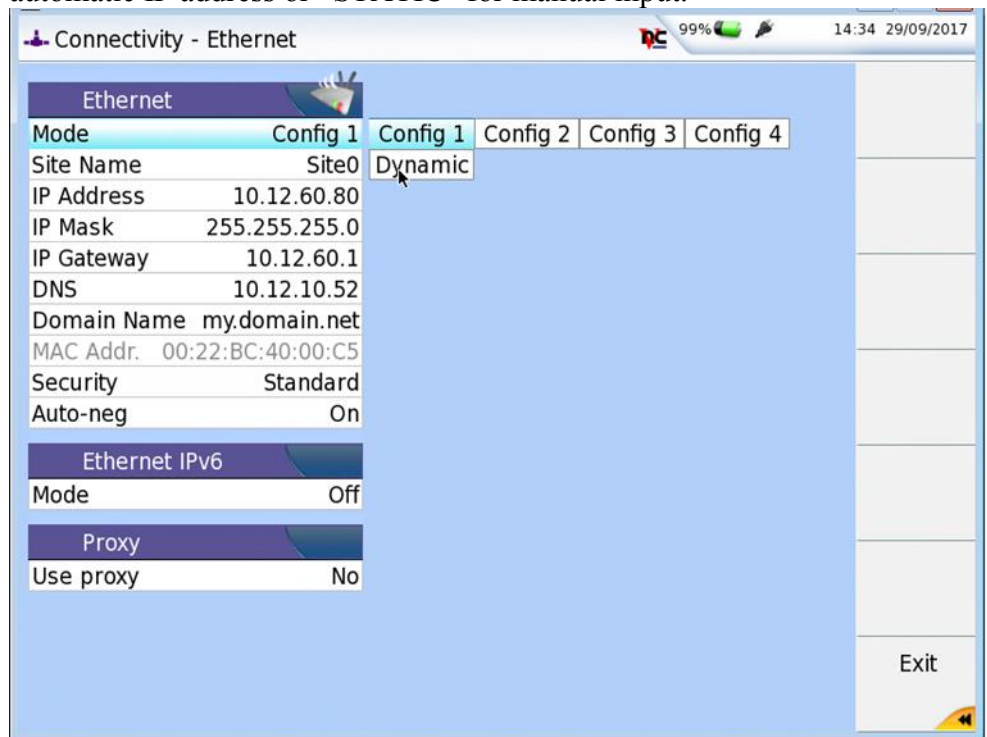
3. StrataSync

- | Step | Action | Details |
|------|----------------|---|
| 1. | Power On | Press and hold the ON/OFF button briefly to turn on the T-BERD 8000 V2. |
| 2. | AC Power | Connect the AC power adapter to the power connector on the right side of the T-BERD 8000 V2. |
| 3. | LAN Connection | Connect the Ethernet Management Port on the top of T-BERD 8000 V2 to a network connection with internet access, using CAT 5E or better cable. |
| 4. | System | Press the HOME button, to the right of the display, to display the HOME screen selections. |



- | | | |
|----|------------------|--|
| 5. | Network Settings | Press the CONNECTIVITY icon and then the ETHERNET icon to display the LAN Settings. Touch on MODE and select DYNAMIC to “DHCP” for |
|----|------------------|--|

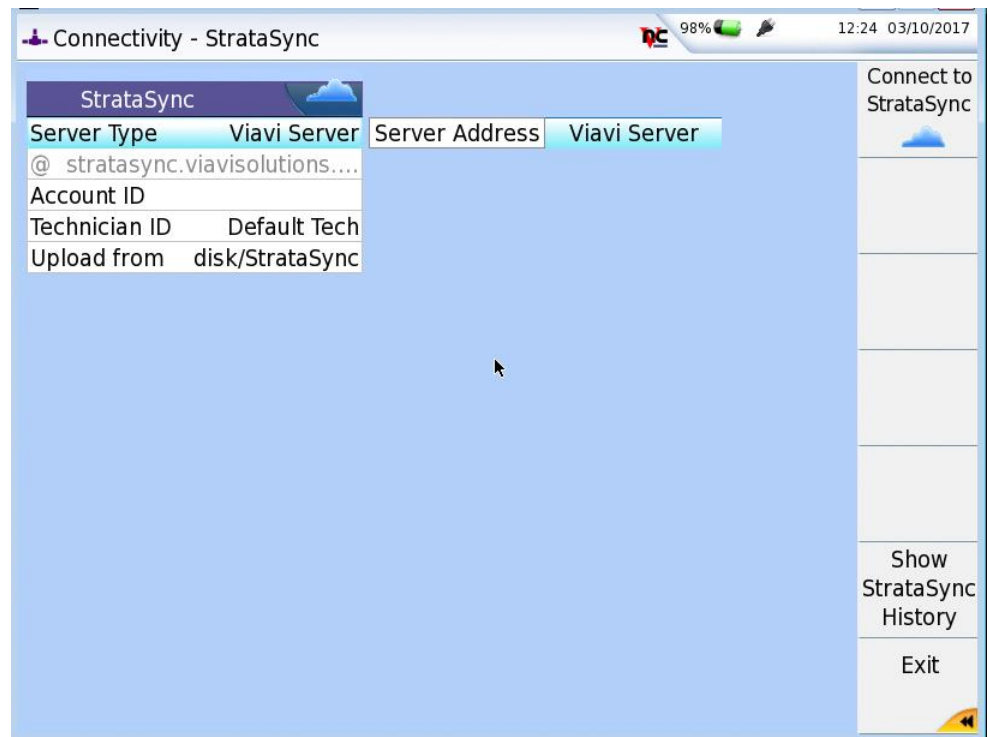
automatic IP address or “STATIC” for manual input.



After configuring LAN settings, press the EXIT button, on the right side of the display, to exit back to the CONNECTIVITY screen.

6. StrataSync

Press the STRATASYNC icon., to display StrataSync Settings. Ensure that **Account ID** and **Technician ID** match those of your StrataSync account. Ensure that the Server Type is set for Viavi Server.



7. Sync

Press **CONNECT TO STRATASYNC** to sync your T-BERD 8000 V2 and initiate upgrades authorized by your StrataSync System Administrator. If an upgrade was assigned to your instrument you will be taken to the **UPGRADES** menus and you will be asked to confirm the upgrade to start the download. If you were expecting an upgrade notification and did not receive one during your sync to Stratasync, contact your company's Stratasync Admin.